



Children's Scholarship Fund Baltimore

# 2022-2023 ANNUAL REPORT



Giving parents a choice.  
Giving children a chance.

# OUR MISSION AND PROGRAM

CSFB is Baltimore's only need-based scholarship program providing low-income Baltimore City students with tuition assistance to attend kindergarten-8th grade at the school of their choice.

We award our scholarships without regard to gender, race, grades or test scores, ethnicity or religious belief.

**284**  
SCHOLARS

CSFB provided tuition assistance to 284 students in FY 2022-23 (July 2022-June 2023).

**41**  
SCHOOLS

CSFB scholars attended 41 schools.

**\$500**  
PER YEAR

Partial scholarships of up to \$2000 per student are provided – with families paying a minimum of \$500 toward tuition per year.

**LOW  
INCOME  
FAMILIES**

Every family who received a scholarship from CSFB is at or below 185% of the federal poverty level.

**ALL STUDENTS  
FROM A  
FAMILY**

All children in a family are eligible to receive funding. If one family member is accepted, we extend offers to all eligible interested children.



## CSFB OUTCOMES...

In Baltimore, data from an independent study conducted with funding from The Friedman Foundation measured high school graduation rates and college attendance rates of CSFB scholars. The study reported exceptional results!

### IMPROVED HIGH SCHOOL GRADUATION RATES

"Our study found that CSFB scholarship recipients had indeed been highly successful in their post elementary-school educational achievements. Nearly all CSFB Alumni contacted had graduated from high school five years after 8th grade – 98.6%."

### COLLEGE ATTENDANCE

"CSFB students are graduating from college at a rate of 84% in 4 years, with 12% obtaining advanced degrees."

CSFB scholarships demonstrate that a relatively small philanthropic investment – the average scholarship was ??? last year – combined with a contribution from the family, can provide a private school education, and a better chance of graduating from high school and attending college.





## CSFB SCHOOLS

Al Rahmah School  
 Archbishop Borders School  
 Bais Yaakov of Baltimore  
 Baltimore Junior Academy  
 Bnos Yisroel of Baltimore  
 Cardinal Shehan Catholic School  
 Cheder Chabad of Baltimore  
 Concordia Preparatory School  
 Darchei Noam Montessori  
 Friends School of Baltimore  
 Greater Grace  
     Christian Academy  
 Greater Youth  
     Christian Academy  
 The H.O.P.E. Academy  
 Immaculate  
     Conception School  
 Immaculate Heart of  
     Mary School  
 Khal Chassidim Preschool  
 McDonogh School  
 Mother Mary Lange  
     Catholic School  
 Mount Pleasant  
     Christian School  
 Mt. Zion Baptist  
     Christian School  
 Ohr Chadash Academy  
 Rock Church Academy  
 Rosedale Baptist School  
 School of the Cathedral  
 St. Agnes Catholic School  
 St. Casimir Catholic School

St. Francis of Assisi School  
 St. Joseph School (Fullerton)  
 St. Mark Catholic School  
 St. Michael – St. Clement  
     Catholic School  
 St Peter's Christian Day School  
 St. Ursula School  
 Talmudical Academy  
 Tashbar Baltimore  
 The Bryn Mawr School  
 The Calvert School  
 The Lamb of God School  
 The Legacy School  
 Unselds' School  
 Waldorf School of Baltimore  
 Torah Institute of Baltimore

## NEXT GENERATION INVESTING EVENT

The Baltimore Next Generation Investing Event is held annually and showcases premier investors who present their top equity investment ideas of the moment.

This unique event features speakers who rarely share their specific stock ideas in a public forum. These successful world-class investors agree to speak because the proceeds from the event go to four Baltimore non-profit organizations that help improve opportunities for local children: CSFB, Southwest Baltimore Charter School, KIPP: Baltimore, and Next One Up.

CSFB received funding of over \$40,000 from the event.



Special thanks to the event founders, former trustee Matt Wyskiel and Christy Wyskiel, for organizing and hosting CSFB's largest annual fundraiser.



For more information and to learn about the event, visit [www.nextgeninvesting.org](http://www.nextgeninvesting.org).

PHOTO: 2022 Baltimore Next Generation Investing Event from [www.nextgeninvesting.org](http://www.nextgeninvesting.org)

## GIVING TUESDAY

Each November CSFB participates in Giving Tuesday.

Giving Tuesday is a global generosity movement unleashing the power of people and organizations to transform their communities and the world. CSFB raised \$XX during our 2022 Giving Tuesday campaign. We are so thankful to our donors for their support!

#GIVING TUESDAY

# DONOR LIST



CSFB would like to thank our donors for helping give our kids a chance.

## \$50,000 – \$100,000

Children's Scholarship Fund  
Clayton Baker Trust  
Davis Family Foundation, The

## \$20,000 – \$49,000

Allegis Group Foundation  
Baltimore Next Generation Investing Event  
Charles Crane Family Foundation, The  
Lockhart Vaughan Foundation Inc.  
Stephen & Renee Bisciotti Foundation  
Thomas Wilson Sanitarium for Children

## \$10,000 – \$19,999

A Friend of Children's Scholarship Fund Baltimore  
Aegon Transamerica Foundation  
Bilson Charity Fund  
Bunting Family Foundation, The  
CFG Bank  
Hardiman Family Foundation, The  
Helen P. Denit Charitable Trust  
Huether-McClelland, Foundation, Inc., The  
Powell, David and Kate  
Rozmaryn, Elizabeth  
T. Rowe Price Foundation  
Venable, LLP

## \$5,000 – \$9,999

Abell Foundation, The  
Bowman, Kara  
Corcoran Jr., Rick  
Lawrence, Robb and Meg  
Matthew & Christina Wyskiel Family Charitable Gift Fund, The  
Roche, George A.  
Wells Fargo  
Woloson, Brad and Crickett

## \$2,000 – \$4,999

Athey, James and Gillian  
Athey, Cliff and Heather  
Bradley BEEM Fund  
DLA Piper LLP  
Ellin & Tucker  
Golfers' Charitable Foundation  
Gore, Kyle and Paula  
Haines, Stephen and Judith  
Iodice, Scott and Blair  
Kent Family Foundation  
Kraska, Jay  
Martin, Jake and Jennifer  
Otterbein-Calia Giving Account  
Powell, John and Susan  
Puglia, Larry and Sandy  
Schauble, Paula  
Sheldon and Carol Glusman Foundation  
Stephen and Judith Haines Account at Schwab Charitable  
United Way of Central Maryland  
Verbic, Dan and Krissie  
Virginia T. Campbell Charitable Gift Fund, The

## \$500 – \$1,999

Ann & Frank Cahouet Foundation, The  
Anonymous  
Baetjer, Howard  
Baetjer Jenkins, Anne  
Bacigalupo, Tracy  
Baum, Matt and Deb  
Bennett, Sean and Connie  
Berrier Family Fund  
Cavanaugh, John F. and Cynthia L.  
Collins, Carville and Mary Lou  
Congregation Shomrei Mishmeres Hakodesh  
Corcoran Sr., Rick and Karen  
Egger, John  
Georgette Kiser Fund, The  
Haines, Stephen and Judith  
Kent Family Foundation  
Klein, Colleen  
Kovacs, Ernie and Donna  
Liebmann Fund  
Measell, Ira D.

Mickle, Anne R.  
Obrecht, Wells  
Preston G. and Nancy M. Athey Fund, The, *in honor of Lawrence, Margaret A.*  
Schaefer Family Gift Fund, The  
Schwartz, Carl and Debra  
Smith, Ralph  
Stewart B. Eckers Charitable Trust, The  
Webb, Kwame  
Webster, Jane  
Williams, Stephen  
Yehuda and Anne Neuberger Philanthropic Fund

## \$100 – \$499

Adams, Jennifer  
Anonymous  
Benevity Fund  
Blaszkiwicz, Bob and June  
Brandt Family Fund at BCF, *in honor of Kate Powell*  
Bushel, Alexander and Mary  
Calderon, Gabriela  
Case, Patricia  
Cavanaugh, John and Cynthia  
Colston, John  
Costco  
Austin Baetjer, Susan  
Davis, Michael and Mary, *in honor of Austin Baetjer, Susan*  
Delaplaine and Wilson Fund, *in honor of Powell, Kate*  
Ellenbogen, Henry  
Fleming, Bruce  
Franklin, Henry and Debbie  
Grays, Valerie  
Guckert Carter, Renee  
Hayward, Scott  
Heacock, Scott and Deborah  
Hentz, Gary  
Holley, Tim  
Landsman, Stacy  
Lawrence, Janice  
Maggie and Bruce Kennedy Fund, The  
Massing, Elizabeth  
Pierce, Ann and Skerjl, Renato  
Prugh, John M.  
Richard and Jennifer Keetley Charitable Trust  
Schnupp, Kevin  
Summers, Christopher and Lori  
UK Online Giving Foundation, The  
Wade, Jim and Rock, Alisa  
Wealcatch, Samuel and Esther  
Ziffer, Rabbi Larry

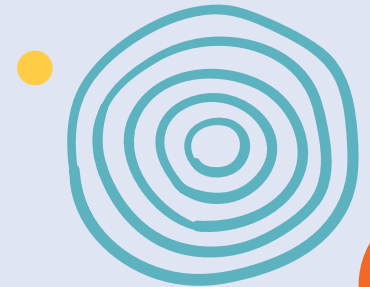
## \$99 AND UNDER

Adkins, Michelle  
Amazon Smiles  
Anonymous  
Baird, Wendy  
Carter, Dinna  
Chiaramonte III, Anthony and Delia  
Classen, Taylor and Kerri  
Green, Daniel  
Jensen, Erica  
Kayoumi, Karen  
Middleton, David  
Network for Good  
Patagonia Inc.  
Rady Holcomb, Missy  
Story, Andrew  
Wilder, Jennifer

CSFB is grateful for every donation we receive from individuals, organizations, and businesses. If your name is missing, please contact [ericajensen@csfbaltimore.org](mailto:ericajensen@csfbaltimore.org).



DONATE TODAY





## SUCCESSFUL SCHOLARS

CSFB is working. YOUR donations make school choice possible for dozens of deserving kids every year. Did you know that CSFB scholarship students attend schools in almost every Baltimore City zip code? Increased enrollment at local schools strengthens the surrounding neighborhoods and communities. And, every donation makes an impact. Thank you!

Our June Jumpstart campaign offered an opportunity to share some success from scholars like Dallas, Kayden, and Zoe Rose, and some of our scholar parents and grandparents share what CSFB has meant to them.



**"Finding the best education was my parents' #1 priority...when we took a tour of a local private school, it was like stepping into a new world of opportunities. My parents had not seen me that happy in a long time. I view CSFB as a path for many children to share this kind of opportunity that can make such a difference."**

– Angelo Otterbein, CSFB Advocate and Trustee

## FINANCIALS

JULY 2022 - JUNE 2023



EXPENSES	\$ 775,987
Operating Costs	\$ 257,673
Scholarships	\$ 518,224
INCOME	\$ 697,651
Children's Scholarship Fund New York	\$ 75,000
Grants	\$ 445,000
Individual Gifts	\$ 130,651
Events	\$ 47,000

# CSFB BOARD OF TRUSTEES 2022 - 2023

**Elizabeth Green, Esq.** BOARD CHAIR

*Breza and Associates, LLC*

**Rick Corcoran, Jr.** TREASURER

*Slate Capital Group*

**Sophia Marquez** ALUMNI DEVELOPMENT CHAIR

*The Balcerzak Group*

**Angelo Otterbein** SECRETARY

*Finalsite*

**Carville Collins, Esq.** GOVERNANCE CHAIR

*Saul Ewing LLP*

**Daniel C. Verbic** FUNDRAISING CHAIR

*Stifel*

Kara Bowman

*University of Maryland Medical System*

Mark Terranova

*Terranova Advising*

Meg Lawrence

*Roland Park Country School*

Renee C. Guckert, Esq.

*Renee Guckert Law*

Stacy Landsman

*Miller Value Partners*

Tracy Bacigalupo, Esq.

*Womble, Bond, Dickinson*

Valerie Grays

*Baltimore City Community College*

Anne Mickle

*St. Paul's School for Girls*

Carl Schwartz

*Pimlico Capital*

Elizabeth Della Massing

*Agora Publishing*

Gaby Calderon

*Johns Hopkins School of Education*

## CSFB STAFF

Erica Jensen EXECUTIVE DIRECTOR

Joanne Sanders PROGRAM ADMINISTRATOR



## Children's Scholarship Fund Baltimore

*giving parents a choice, giving children a chance*

P.O. Box 5282 • Baltimore, MD 21224

tel 410.243.2510

[www.csfbaltimore.org](http://www.csfbaltimore.org)

VISIT OUR WEBSITE

